

PRELIMINARY DRAWINGS

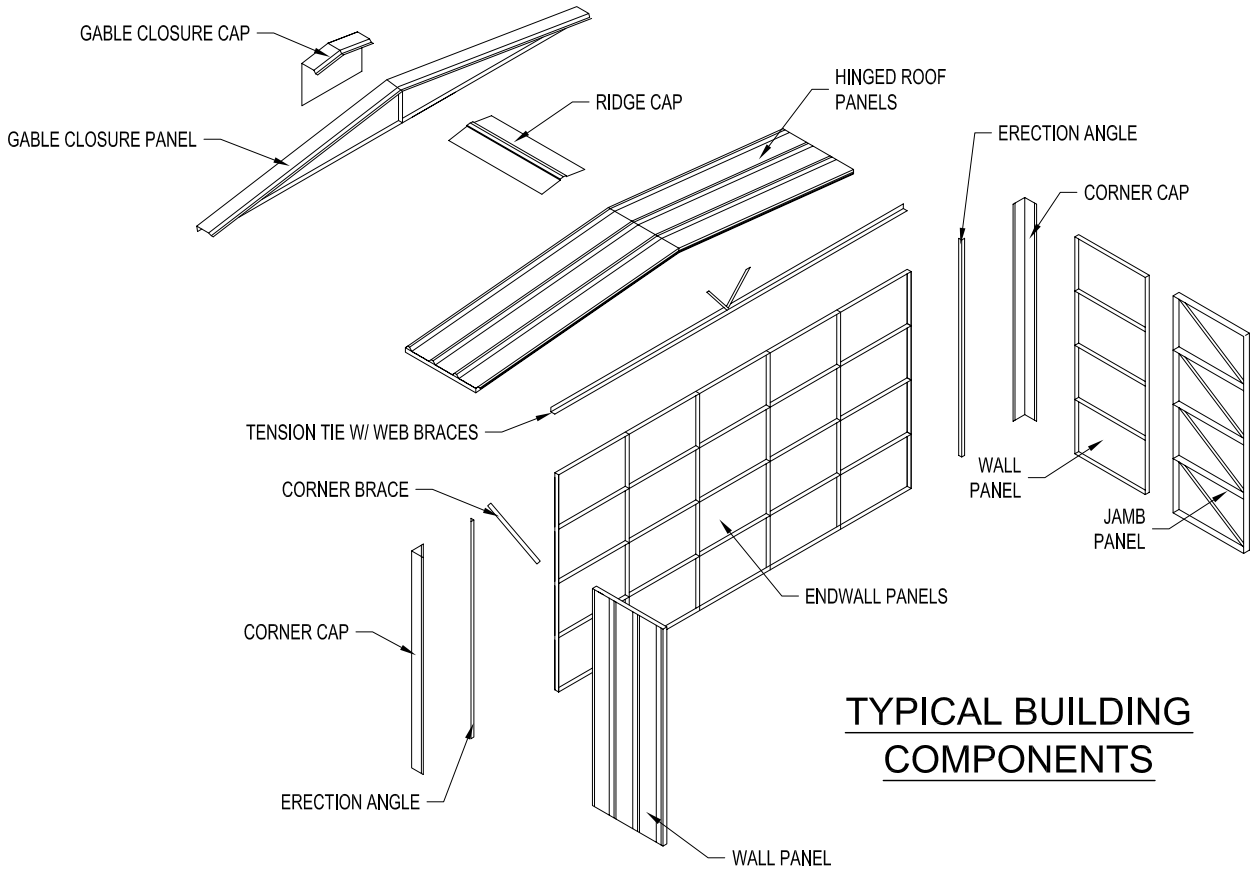
FOR A 9'W X 8'H EAVE X 12'L KELLY KLOSURE BUILDING



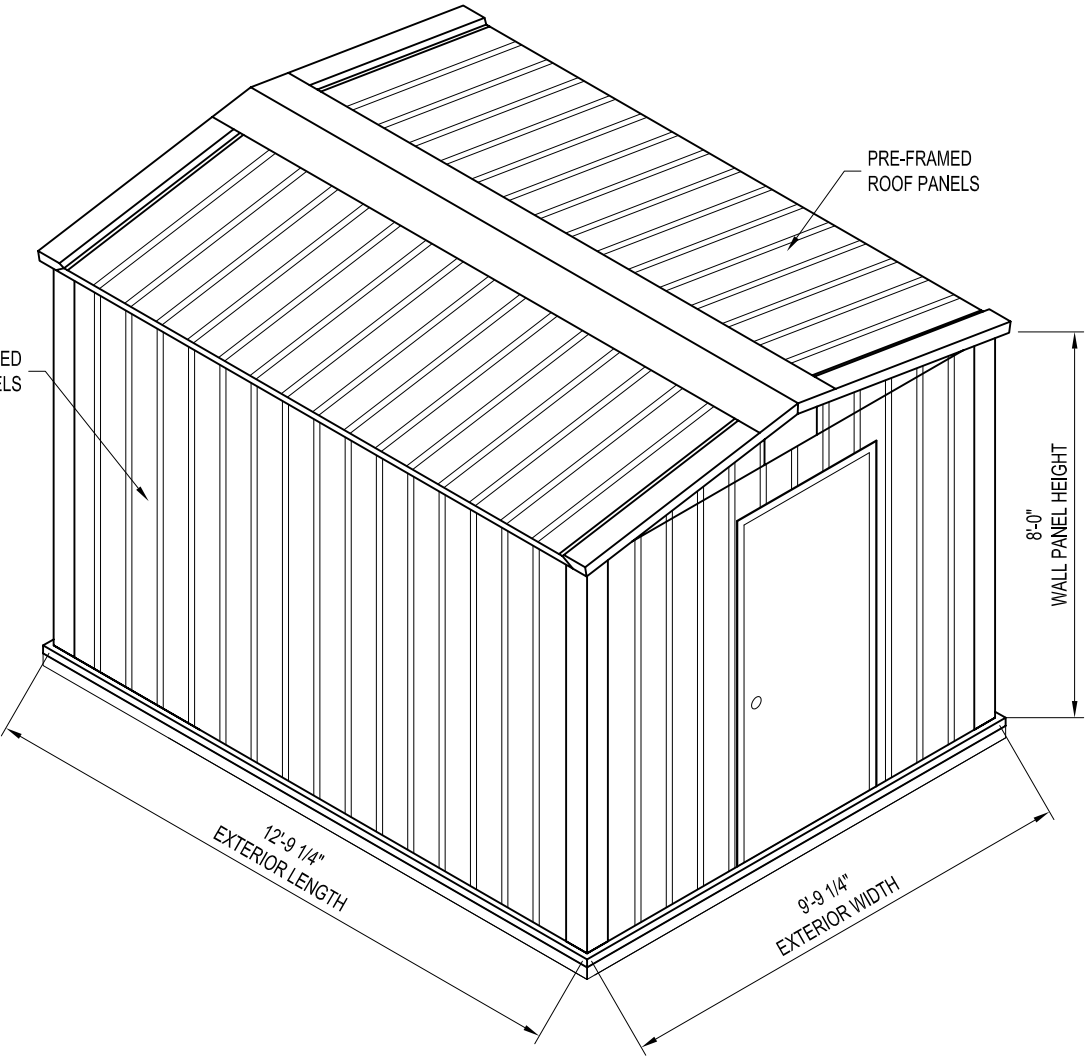
PROJECT:

BUYER:  
PURCHASE ORDER:  
KELLY ORDER:

REVISION	DATE	COMMENT
----------	------	---------



TYPICAL BUILDING COMPONENTS



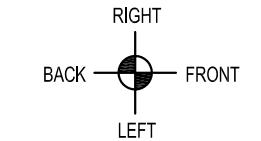
P/N: KK091208

NOT FOR CONSTRUCTION

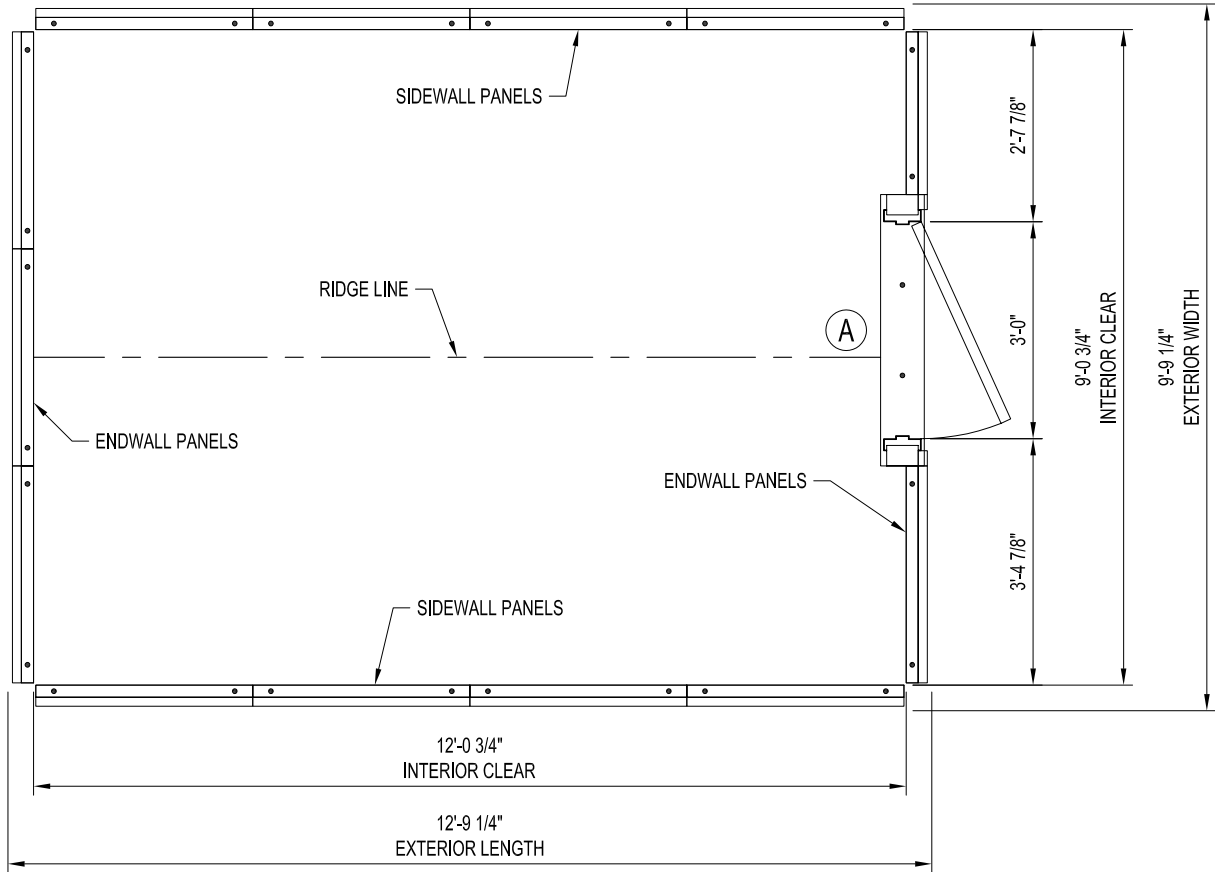
DRAWN BY: ALEX CARSTENS	PROJECT TITLE: 9'W X 8'H EAVE X 12'L P/N: KK091208			BUYER:	
	DATE: 1/28/11	APPROVED BY: DATE:	REVISION: DATE:	K.K. ORDER NUMBER:	BUYER P.O. NUMBER:
SCALE: NOT TO SCALE		K.K. QUOTE NUMBER:			

EASY TO ASSEMBLE PANEL  
SYSTEMS FOR RELOCATABLE  
ENCLOSURES FROM WEATHER  
BARRIERS TO BUILDINGS

Mfg. by Kelly Group, Inc.  
P.O. Box 1058 Fremont, NE 68026  
Phone: 800-228-7230 Fax: 402-727-1363 Web: [www.kellyklosure.com](http://www.kellyklosure.com)



PLEASE INDICATE "NORTH" DIRECTION



PLAN VIEW

← START BUILDING ASSEMBLY AT THIS END (LEFT ENDWALL)

WORK IN THIS DIRECTION →

*IMPORTANT NOTE: DIRECTION OF ASSEMBLY WILL AFFECT MANUFACTURING OF THE BUILDING!*

CHANGING DIRECTION OF ASSEMBLY AFTER MANUFACTURING MAY MAKE ASSEMBLY MORE DIFFICULT! IF BUILDING IS TO BE ASSEMBLED FROM THE RIGHT END DUE TO SITE CONDITIONS, PLEASE INDICATE ABOVE!

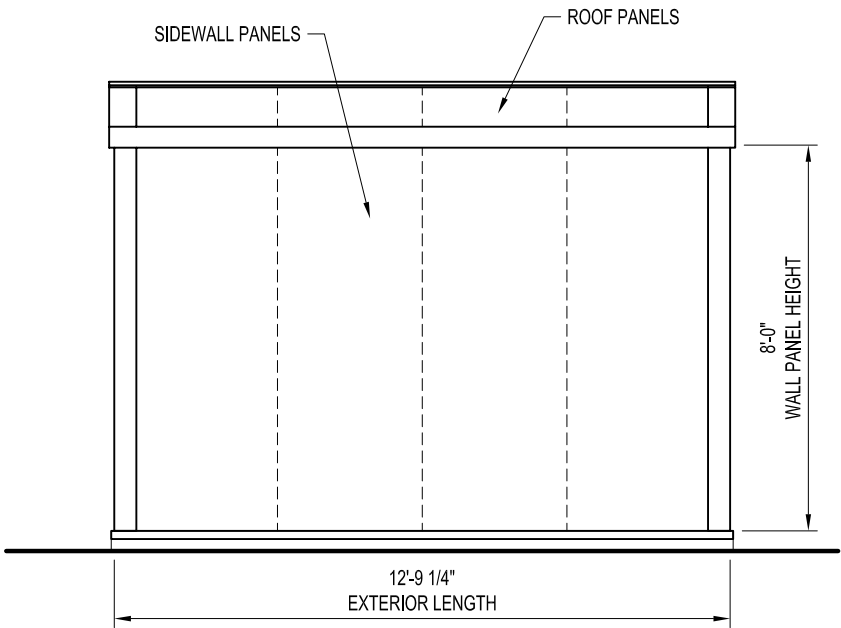
DOOR SCHEDULE	
MARK NO.	DESCRIPTION
(A)	3'-0"W X 7'-0"H PERSONNEL DOOR (SWING AS SHOWN ON PLAN VIEW)

DRAWN BY: ALEX CARSTENS		PROJECT TITLE: 9W X 8H EAVE X 12'L P/N: KK091208		PAGE TITLE: PLAN VIEW	
DATE: 1/28/11	APPROVED BY: DATE:	REVISION: DATE:		SHEET 2 OF 7	
SCALE: 3/8" = 1'-0"		BUYER:		PROPRIETARY INFORMATION	
K.K. QUOTE NUMBER:		K.K. ORDER NUMBER:		THIS DRAWING & THE DESIGN IT COVERS ARE THE EXCLUSIVE PROPERTY OF KELLY GROUP, INC. OF NEW HAMPSHIRE. NO PART OF THIS DRAWING OR DESIGN MAY BE REPRODUCED OR TRANSMITTED IN ANY FORM OR BY ANY MEANS, ELECTRONIC OR MECHANICAL, INCLUDING PHOTOCOPYING, RECORDING, OR BY ANY INFORMATION STORAGE AND RETRIEVAL SYSTEM, WITHOUT THE WRITTEN PERMISSION OF KELLY GROUP, INC. OF NEW HAMPSHIRE. ANY REPRODUCTION OR TRANSMISSION OF THIS DRAWING OR DESIGN WITHOUT THE WRITTEN PERMISSION OF KELLY GROUP, INC. OF NEW HAMPSHIRE IS STRICTLY PROHIBITED. KELLY GROUP, INC. OF NEW HAMPSHIRE ASSUMES NO LIABILITY FOR ANY INACCURACIES OR OMISSIONS IN THIS DRAWING OR DESIGN.	
		BUYER P.O. NUMBER:			

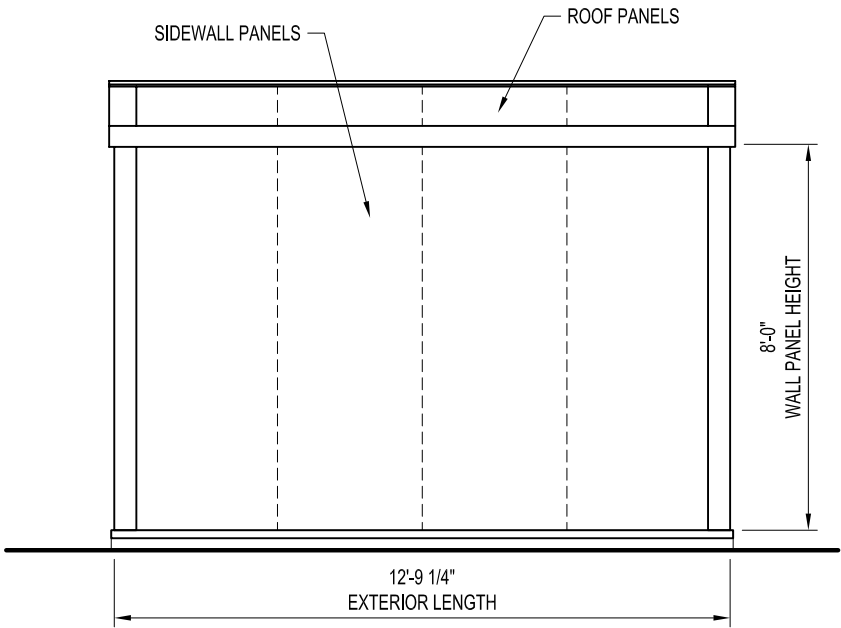
EASY TO ASSEMBLE PANEL

SYSTEMS FOR RELOCATABLE ENCLOSURES FROM WEATHER BARRIERS TO BUILDINGS

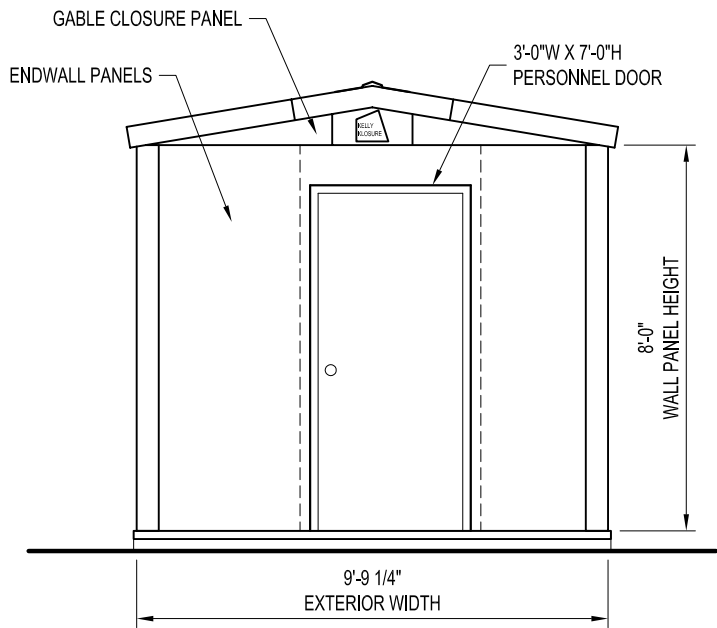
Mfr. by Kelly Group, Inc.  
P.O. Box 1058 Fremont, NE 68026  
Phone: 800-228-7230 Fax: 402-727-1363 Web: www.kellyklosure.com



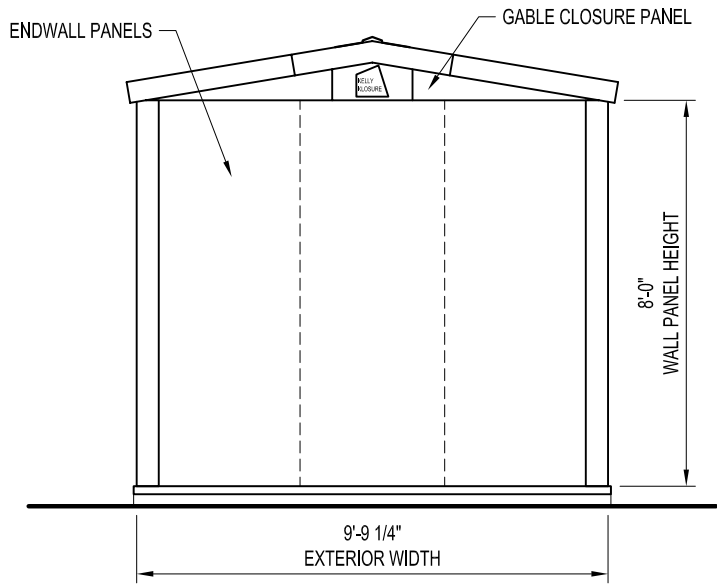
LEFT ELEVATION



RIGHT ELEVATION



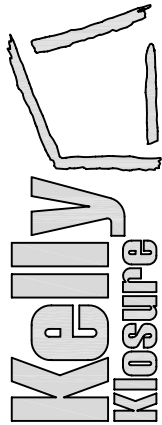
FRONT ELEVATION

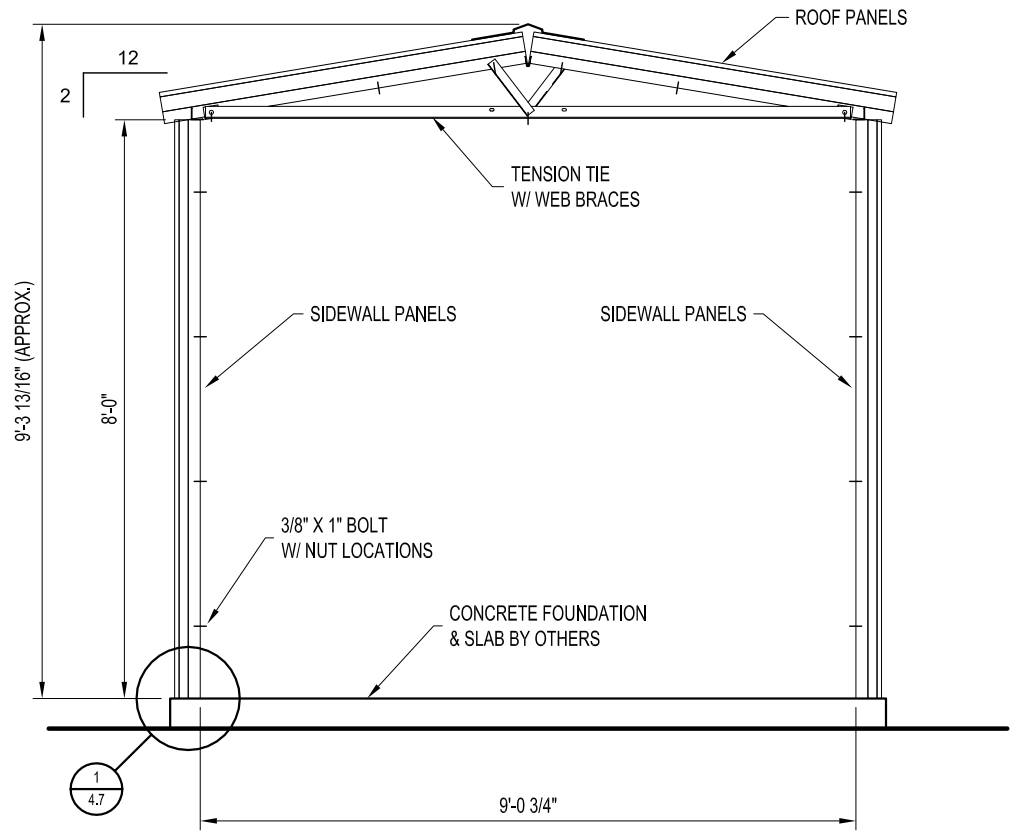


BACK ELEVATION

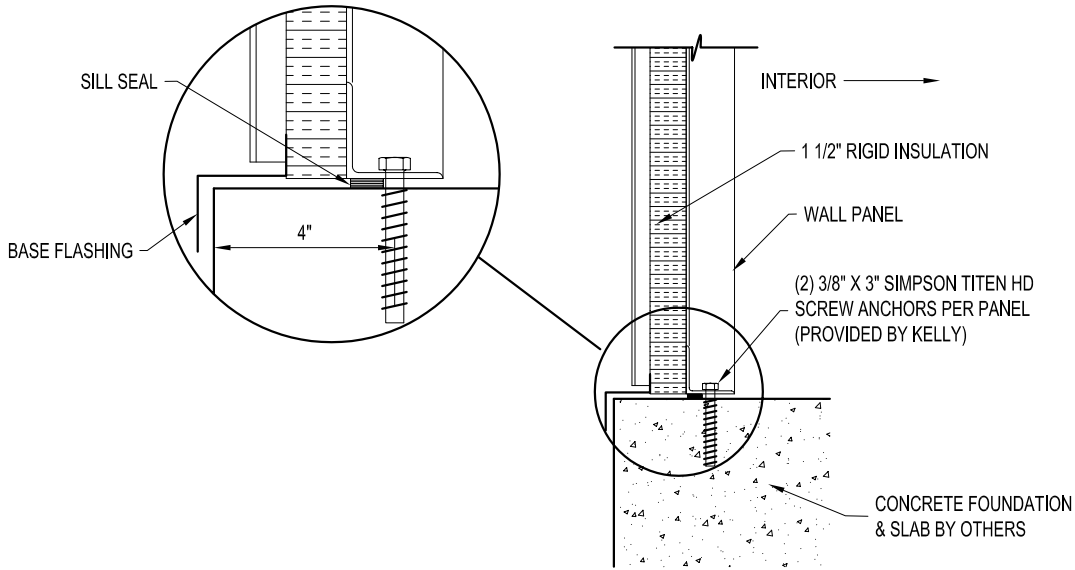
NOT FOR CONSTRUCTION

DRAWN BY: ALEX CARSTENS		PROJECT TITLE: 9W X 8H EAVE X 12'L P/N: KK091208		PAGE TITLE: ELEVATIONS	
DATE: 1/28/11	APPROVED BY: DATE:	REVISION: DATE:	SCALE: 1/4" = 1'-0"	SHEET 3 OF 7	
K.K. QUOTE NUMBER:		BUYER: K.K. ORDER NUMBER:		PROPRIETARY INFORMATION THIS DRAWING & THE DESIGN IT COVERS ARE THE EXCLUSIVE PROPERTY OF KELLY GROUP, INC. OF NEW JERSEY. NO PART OF THIS DRAWING OR DESIGN MAY BE REPRODUCED OR TRANSMITTED IN ANY FORM OR BY ANY MEANS, ELECTRONIC OR MECHANICAL, INCLUDING PHOTOCOPYING, RECORDING, OR BY ANY INFORMATION STORAGE AND RETRIEVAL SYSTEM, WITHOUT THE WRITTEN PERMISSION OF KELLY GROUP, INC. OF NEW JERSEY. ANY REPRODUCTION OR TRANSMISSION OF THIS DRAWING OR DESIGN WITHOUT THE WRITTEN PERMISSION OF KELLY GROUP, INC. OF NEW JERSEY IS STRICTLY PROHIBITED. KELLY GROUP, INC. OF NEW JERSEY ASSUMES NO RESPONSIBILITY FOR ANY INACCURACIES OR OMISSIONS IN THIS DRAWING OR DESIGN.	
BUYER P.O. NUMBER:		EASY TO ASSEMBLE PANEL SYSTEMS FOR RELOCATABLE ENCLOSURES FROM WEATHER BARRIERS TO BUILDINGS		Mfg. by Kelly Group, Inc. P.O. Box 1058 Fremont, NE 68026 Phone: 800-228-7230 Fax: 402-727-1363 Web: www.kellyklosure.com	





CROSS-SECTION  
(9'-0" WIDTH)



PANEL BASE SECTION  
SCALE: 1 1/2" = 1'-0"

NOT FOR CONSTRUCTION

DRAWN BY: ALEX CARSTENS		PROJECT TITLE: 9'W X 8'H EAVE X 12'L P/N: KK091208		PAGE TITLE: CROSS-SECTION	
DATE: 1/28/11		BUYER:		SHEET 4 OF 7	
APPROVED BY:					
DATE:					
REVISION:		BUYER P.O. NUMBER:		PROPRIETARY INFORMATION THIS DRAWING & THE DESIGN IT COVERS ARE THE EXCLUSIVE PROPERTY OF KELLY GROUP, INC. NO PART OF THIS DRAWING OR DESIGN MAY BE REPRODUCED OR TRANSMITTED IN ANY FORM OR BY ANY MEANS, ELECTRONIC OR MECHANICAL, INCLUDING PHOTOCOPYING, RECORDING, OR BY ANY INFORMATION STORAGE AND RETRIEVAL SYSTEM, WITHOUT THE WRITTEN PERMISSION OF KELLY GROUP, INC. OR ITS AGENTS. ANY VIOLATION OF THIS PERMISSION SHALL BE SUBJECT TO THE FULL AND EXCLUSIVE JURISDICTION OF THE FEDERAL COURTS OF THE UNITED STATES OF AMERICA. KELLY GROUP, INC. AND ITS AGENTS MAKE NO REPRESENTATION REGARDING DRAWING SCALE & ACCURACY.	
DATE:					
SCALE: 3/8" = 1'-0"					
K.K. QUOTE NUMBER:		K.K. ORDER NUMBER:			

Kelly

Klosure

EASY TO ASSEMBLE PANEL

SYSTEMS FOR RELOCATABLE

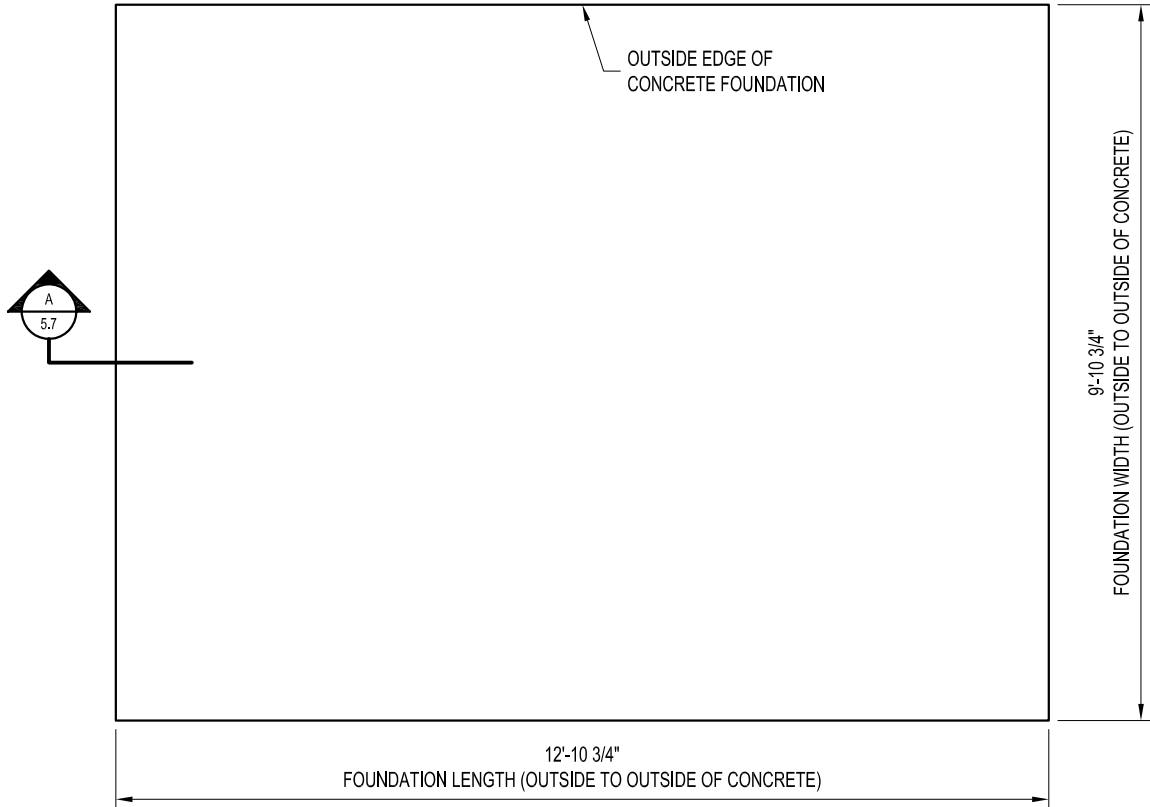
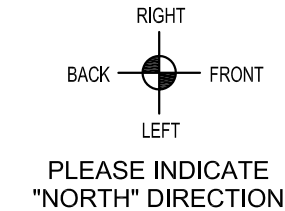
ENCLOSURES FROM WEATHER

BARRIERS TO BUILDINGS

Mfr. by Kelly Group, Inc.

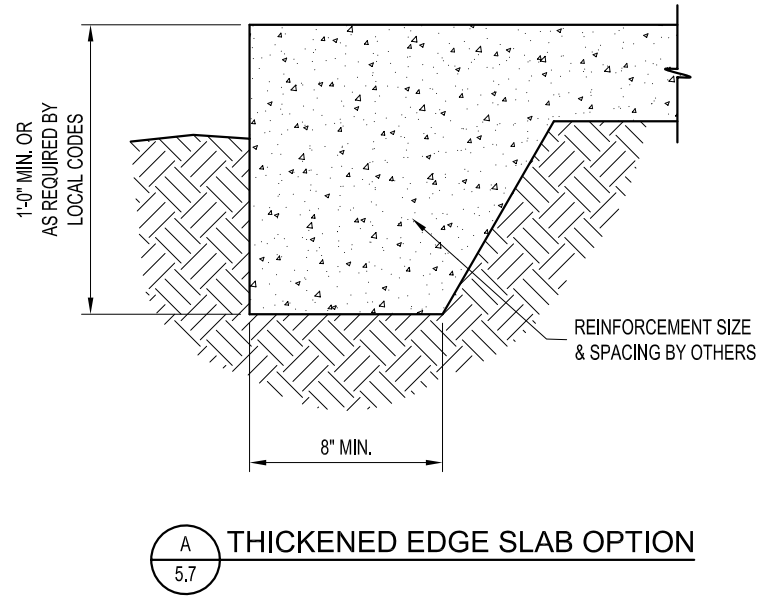
P.O. Box 1058 Fremont, NE 68026

Phone: 800-228-7230 Fax: 402-727-1363 Web: www.kellyklosure.com

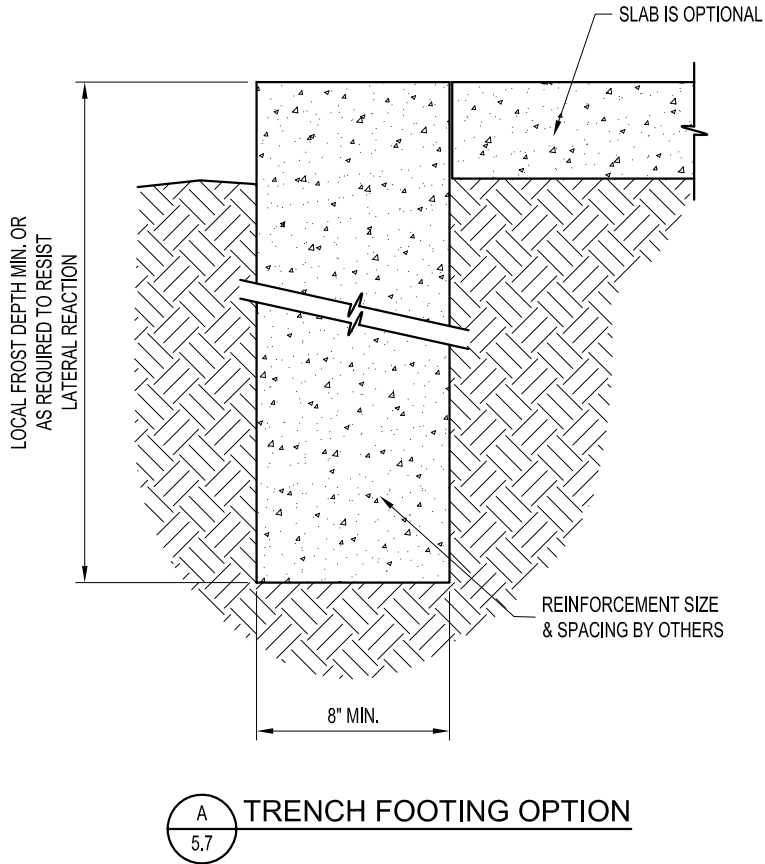


FOUNDATION PLAN VIEW

NOTE:  
THE FOUNDATION SIZE SHOWN IS  
THE MINIMUM RECOMMENDED SIZE  
TO PREVENT WATER LEAKAGE.




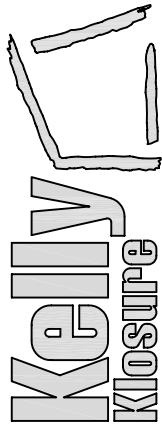
A 5.7 THICKENED EDGE SLAB OPTION



A 5.7 TRENCH FOOTING OPTION

NOT FOR CONSTRUCTION

DRAWN BY: ALEX CARSTENS		PROJECT TITLE: 9'W X 8'H EAVE X 12'L P/N: KK091208		PAGE TITLE: FOUNDATION PLAN VIEW			EASY TO ASSEMBLE PANEL SYSTEMS FOR RELOCATABLE ENCLOSURES FROM WEATHER BARRIERS TO BUILDINGS
DATE: 1/28/11				SHEET 5 OF 7			
APPROVED BY:							
DATE:						<div>Mfrg. by Kelly Group, Inc. P.O. Box 1058 Fremont, NE 68026 Phone: 800-228-7230 Fax: 402-727-1363 Web: www.kellyklosure.com</div>	
REVISION:							
DATE:							
SCALE: 3/8" = 1'-0"		BUYER:		PROPRIETARY INFORMATION		THIS DRAWING & THE DESIGN IT COVERS ARE THE EXCLUSIVE PROPERTY OF KELLY GROUP, INC. OF NE. THEY ARE PROVIDED ONLY ON THE USER'S EXPRESS AGREEMENT THAT THEY WILL NOT BE REPRODUCED, COPIED, OR TRANSMITTED IN ANY FORM OR BY ANY MEANS, ELECTRONIC OR MECHANICAL, INCLUDING PHOTOCOPYING, RECORDING, OR BY ANY INFORMATION STORAGE AND RETRIEVAL SYSTEM, WITHOUT THE WRITTEN PERMISSION OF KELLY GROUP, INC. OF NE. TO THE USER OR THEIR AGENTS. THE USER OF THIS DRAWING AGREES TO HOLD KELLY GROUP, INC. OF NE. HARMLESS NO REPRESENTATION REGARDING DRAWING SCALE & ACCURACY.	
K.K. QUOTE NUMBER:		K.K. ORDER NUMBER:					
BUYER P.O. NUMBER:							



EASY TO ASSEMBLE PANEL  
SYSTEMS FOR RELOCATABLE  
ENCLOSURES FROM WEATHER  
BARRIERS TO BUILDINGS

Mfg. by Kelly Group, Inc.  
P.O. Box 1058 Fremont, NE 68026  
Phone: 800-228-7230 Fax: 402-727-1363 Web: [www.kellyklosure.com](http://www.kellyklosure.com)

1) BUILDING STRUCTURE

A) BUILDING STRUCTURAL DESIGN CRITERIA

- a) BUILDING CODE: 2006 IBC
- b) ROOF LOAD: 40 PSF (GROUND SNOW LOAD)
- c) SNOW DRIFT LOAD: NONE
- d) WIND LOAD: 100 MPH (3 SECOND GUST)
- e) SEISMIC: DESIGN CATEGORY "C", SOIL SITE CLASS "D"
- f) OCCUPANCY CATEGORY: 2

B) THIS BUILDING HAS BEEN DESIGNED IN ACCORDANCE WITH THE BUILDING CODE AND BASIC STRUCTURAL DESIGN DATA LISTED ABOVE. THE BUILDING HAS BEEN DESIGNED AND ENGINEERED FROM A STRUCTURAL ASPECT ONLY. OTHER CODE COMPLIANCE ISSUES SUCH AS OCCUPANCY, EGRESS, HVAC, ELECTRICAL, MECHANICAL, FIRE SAFETY ETC. IS THE RESPONSIBILITY OF THE END USER OR ITS REPRESENTATIVES. MATERIAL SPECIFICATIONS ARE AVAILABLE UPON REQUEST.

C) ANY REQUIRED "MAJOR PENETRATIONS" THROUGH THE WALLS OR ROOF OF THE BUILDING SHOULD BE NOTED AND LOCATED BEFORE RELEASE FOR MANUFACTURING IS GIVEN. THIS WILL ALLOW KELLY TO MODIFY FRAMING AS NECESSARY. FIELD CUTTING OF ANY STEEL FRAMING MEMBERS IS NOT RECOMMENDED AND WILL VOID THE STRUCTURAL DESIGN CRITERIA AND ANY WARRANTIES. "MAJOR PENETRATIONS" ARE ITEMS LIKE HVAC DUCTS AND LARGE PIPES OR CONDUITS.

D) IF PERMITS ARE TO BE PULLED FOR THIS PROJECT, KELLY KLOSURE RECOMMENDS THAT THIS BE DONE BEFORE BUILDING IS RELEASED FOR MANUFACTURING. ANY INSPECTIONS REQUIRED FOR PERMITS ARE THE RESPONSIBILITY OF THE END USER OR ITS REPRESENTATIVES.

IMPORTANT NOTE: ANY AND ALL CHANGES, MODIFICATIONS OR RETROFITS REQUIRED DUE TO PERMITS BEING PULLED AFTER THE BUILDING IS MANUFACTURED ARE NOT KELLY'S RESPONSIBILITY.

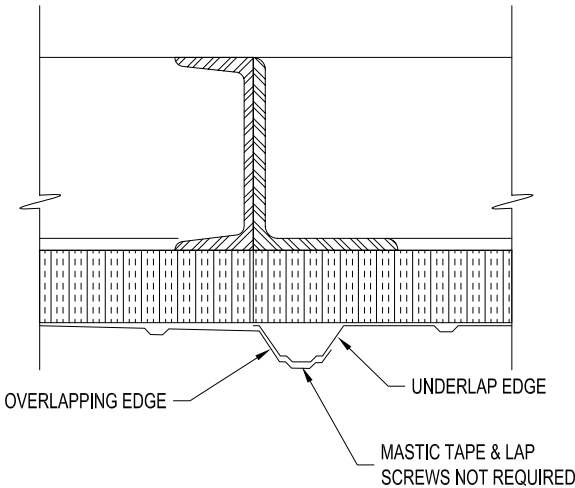
2) FOUNDATIONS

A) RECOMMENDED FOUNDATION SIZE IS GIVEN ON THE FOUNDATION PLAN VIEW PAGE OF THIS SET.

- a) OUTSIDE DIMENSIONS AS SHOWN ARE REQUIRED TO ACCEPT BUILDING BASE FLASHING AS SUPPLIED. A TOLERANCE OF + OR - 1/4" IS ACCEPTABLE. THE SLAB SHOULD BE LEVEL AROUND PERIMETER OF FOUNDATION WITH A TOLERANCE OF + OR - 1/4". ANY VARIANCE COULD CREATE A LEAKAGE PROBLEM AT BASE OF BUILDING.
- b) IF THE BUILDING IS TO BE PLACED ON A LARGER FOUNDATION THAN SHOWN, SPECIAL BASE FLASHING CAN BE SUPPLIED UPON REQUEST.
- c) USERS ARE TO ESTABLISH SIZE AND REINFORCEMENT REQUIREMENTS FOR FOUNDATIONS TO ACCOMMODATE SITE SOIL CONDITIONS AND LOCAL FROST DEPTH.
- d) BUILDING ANCHOR BOLT REACTIONS ARE AVAILABLE UPON REQUEST.

B) ANCHOR BOLTS

- a) PRESETTING OF ANCHOR BOLTS IS NOT REQUIRED. ANCHOR BOLTS WILL BE INSTALLED AS THE BUILDING IS ERECTED. KELLY RECOMMENDS THE *SIMPSON TITEN HD SCREW ANCHOR* AS SHOWN ON THE BUILDING BASE SECTION ON THE CROSS-SECTION PAGE.
- b) CONCRETE ANCHORS WILL BE SUPPLIED WITH THE BUILDING SHIPMENT.



OVERLAP DETAIL

3) PANEL COMPONENTS AND FINISHES (SEE PANEL COMPONENTS ISOMETRIC)

A) PANEL FRAMES & STRUCTURAL STEEL COMPONENTS

- a) ONE COAT, CORROSION RESISTANT, WATER REDUCIBLE, ACRYLIC ALKYD EMULSION PRIMER

B) EXTERIOR STEEL SIDING AND ROOFING

- a) 29 GA. 3/4" RIBBED "IMPERIAL RIB", DOES NOT REQUIRE SEAL TAPE OR STITCH SCREWS AT OVERLAPS
- b) SIDING AND ROOFING TO BE GALVALUME COATED WITH PRIMER AND SILICONE MODIFIED POLYESTER PAINT FINISH

C) FACTORY INSTALLED INSULATION

- a) INSULATION TO BE RIGID, CLOSED CELL, POLYISOCYANURATE WITH FOIL FACING
- b) WALLS: 1.1/2" THICK (R-11)
- c) ROOF: 2.1/2" THICK (R-19)

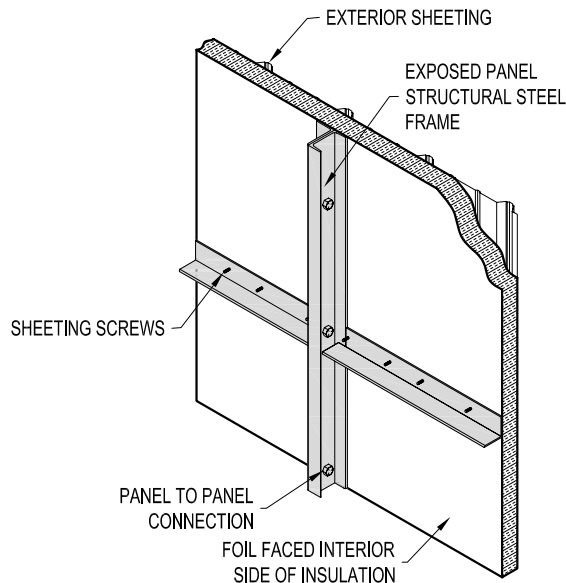
D) FACTORY INSTALLED STEEL INSULATION LINER

- a) 28 GA. G-90 GALVANIZED STEEL
- b) INSTALLED IN WALLS ONLY

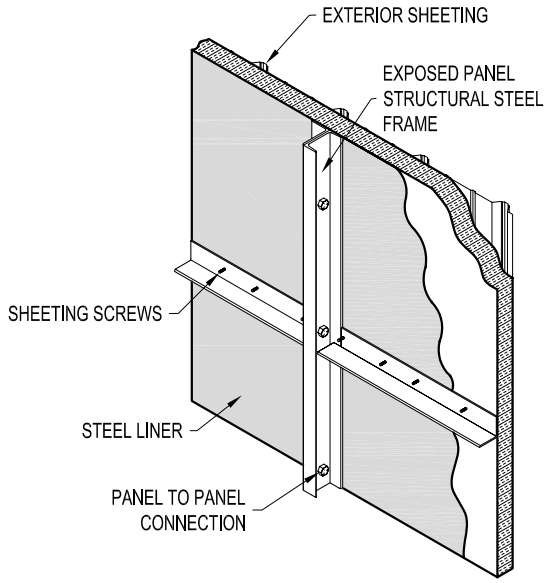
4) PERSONNEL AND EQUIPMENT DOORS

A) 3'W X 7'H PERSONNEL DOOR FACTORY INSTALLED IN A 3'-9" WIDE WALL PANEL, TYPE "A" SHOWN ON PLAN VIEW

- a) DOOR FRAME: 16 GA. STEEL, PRIMED AND FINISH PAINTED
- b) DOOR LEAF: 18 GA. STEEL, HONEYCOMB CORE, PRIMED AND FINISH PAINTED
- c) \*ENTRY LOCK: STANDARD LOCKSET, S.PARKER B9160 SERIES, STAINLESS STEEL
- d) HINGES: (3) 4.5" BALL BEARING, STANLEY FBB179, US26D FINISH
- e) \*CLOSER: STANDARD, S.PARKER 954, ALUMINUM FINISH
- f) DOOR SWEEP: STANDARD, MD DCV134, ALUMINUM FINISH
- g) WEATHER STRIPPING: NONE



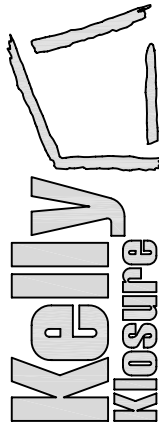
ROOF PANEL ISOMETRIC



WALL PANEL ISOMETRIC

NOT FOR CONSTRUCTION

EASY TO ASSEMBLE PANEL  
SYSTEMS FOR RELOCATABLE  
ENCLOSURES FROM WEATHER  
BARRIERS TO BUILDINGS



Mfr. by Kelly Group, Inc.

P.O. Box 1058 Fremont, NE 68026

Phone: 800-228-7230 Fax: 402-727-1363 Web: www.kellyklosure.com

PAGE TITLE:

BUILDING NOTES  
& PANEL ISOMETRIC

SHEET 6 OF 7

PROPRIETARY INFORMATION

THIS DRAWING & THE DESIGN IT COVERS ARE THE EXCLUSIVE PROPERTY OF KELLY GROUP, INC. NO PART OF THIS DRAWING OR THE DESIGN IT COVERS MAY BE REPRODUCED OR TRANSMITTED IN ANY FORM OR BY ANY MEANS, ELECTRONIC OR MECHANICAL, INCLUDING PHOTOCOPYING, RECORDING, OR BY ANY INFORMATION STORAGE AND RETRIEVAL SYSTEM, WITHOUT THE WRITTEN PERMISSION OF KELLY GROUP, INC. TO THE USER OR THEIR AGENTS. KELLY GROUP, INC. AND ITS AGENTS ASSUME NO RESPONSIBILITY FOR ANY ERRORS OR OMISSIONS IN THIS DRAWING.

PROJECT TITLE:

9'W X 8'H EAVE X 12'L  
P/N: KK091208

BUYER:

BUYER P.O. NUMBER:

K.K. ORDER NUMBER:

DRAWN BY:  
ALEX CARSTENS

DATE:  
1/28/11

APPROVED BY:

DATE:

REVISION:

DATE:

SCALE: NOT TO SCALE

K.K. QUOTE NUMBER:

29 GAUGE - PAINTED "IMPERIAL RIB" PROFILE  
EXTERIOR SHEETING & TRIM COLOR AVAILABILITY CHART

THIS CHART SHOULD BE USED IF YOUR QUOTE OR BUDGET ESTIMATE CALLS OUT  
"29 GAUGE PAINTED IMPERIAL RIB" EXTERIOR SHEETING AND TRIM.



**IMPORTANT NOTE FOR GUTTERS AND DOWNSPOUTS**  
GUTTERS ARE SUPPLIED IN 26 GAUGE MATERIAL, THE  
COLOR FOR THE GUTTERS SHOULD BE CHOSEN FROM THE  
CHART LABELED "26 GAUGE PAINTED PBR PROFILE".  
DOWNSPOUTS ARE AVAILABLE IN ANY COLOR.

METAL COLOR CHIPS ARE AVAILABLE UPON REQUEST.

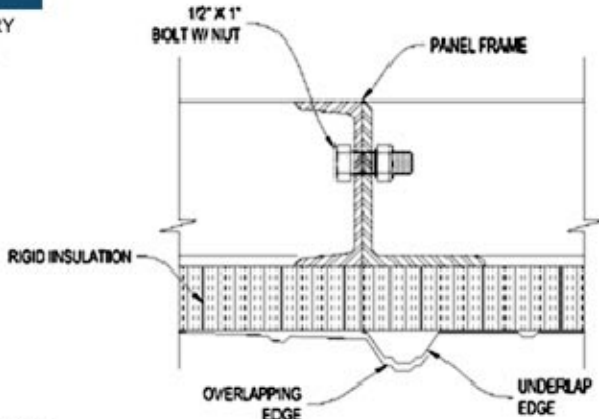
ALL COLORS SHOWN ON THIS CHART ARE A 29 GAUGE  
GALVALUME COATED BASE METAL WITH SILICONE  
POLYESTER COLOR COAT.

PLAIN GALVALUME FINISH IS AVAILABLE UPON REQUEST.

PLAIN GALVANIZED FINISH IS AVAILABLE FOR MORE  
ECONOMICAL APPLICATIONS.

ALL COLORS SHOWN HAVE A 30 YEAR LIMITED WARRANTY  
EXCEPT "CRIMSON RED" WHICH HAS A 3-YEAR WARRANTY  
ON ROOF PANELS AND A 5-YEAR WARRANTY ON WALL  
PANELS. (WARRANTY INFORMATION AVAILABLE UPON  
REQUEST).

ALL COLORS SHOWN CONTAIN NOT MORE THAN .06%  
LEAD EXCEPT "CRIMSON RED". USE THIS COLOR FOR  
APPLICATIONS WHICH COMPLY WITH FEDERAL, STATE  
AND LOCAL REGULATIONS FOR LEAD BASED PAINT.



**TYPICAL OVERLAP DETAIL**  
MASTIC TAPE AND LAP SCREWS NOT REQUIRED  
FOR "IMPERIAL RIB" PROFILE SHEETING OVERLAPS.

NOT FOR CONSTRUCTION

COLOR SCHEDULE

CHOOSE COLORS ACCORDING TO CHARTS LOCATED AT:  
<http://www.kellyklosure.com/resource>  
CLICK ON:

"29 GAUGE PAINTED IMPERIAL RIB PROFILE COLOR CHART"	
ITEM	COLOR OR FINISH REQUESTED
ROOF SHEETING & RIDGE CAP	
WALL SHEETING & BASE FLASHING	
VERTICAL CORNER FLASHING	
EAVE & GABLE FLASHING	
PERS. & EQUIPMENT DOOR TRIM	
PERSONNEL DOORS	GRAY
INTERIOR LINER	GALVANIZED STEEL (WALLS ONLY)
EXPOSED INTERIOR STRUCTURAL STEEL	STANDARD RED PRIMER

INSTRUCTIONS FOR OPTIONAL DOORS & ACCESSORY LOCATIONS

EQUIPMENT DOOR PLACEMENT & SIZE RESTRICTIONS:

THE OPTIONAL EQUIPMENT DOOR MUST BE PLACED IN ONE OF THE END WALLS WITH AT LEAST ONE FULL PANEL OPEN ON BOTH SIDES. THE DOOR WILL NEED AT LEAST 2'-6" CLEAR ABOVE FOR THE MANUAL OR ELECTRIC OPERATOR.

3'-0"W PERSONNEL DOOR PLACEMENT RESTRICTIONS:

PERSONNEL DOORS WILL BE PLACED IN 3'-9" PANELS WITH A 2'-3" PANEL BESIDE THEM. THE DOORS CANNOT BE PLACED ON THE END PANEL OF ANY WALL.

5'-8"W DOUBLE DOOR PLACEMENT RESTRICTIONS:

DOUBLE DOORS WILL BE PLACED IN 6'-0" PANELS. THE DOORS CANNOT BE PLACED ON THE END PANEL OF ANY WALL.

PROJECT TITLE:  
9'W X 8'H EAVE X 12'L  
P/N: KK091208

DATE:  
1/28/11

APPROVED BY:  
DATE:

REVISION:  
DATE:

SCALE:  
NOT TO SCALE

KK QUOTE NUMBER:

BUYER:

K.K. ORDER NUMBER:

BUYER P.O. NUMBER:

COLOR SCHEDULE & NOTES

SHEET 7 OF 7

PROPRIETARY INFORMATION  
THIS DRAWING & THE DESIGN IT COVERS ARE THE EXCLUSIVE PROPERTY OF KELLY GROUP, INC. NO PART OF THIS DRAWING OR DESIGN MAY BE REPRODUCED OR TRANSMITTED IN ANY FORM OR BY ANY MEANS, ELECTRONIC OR MECHANICAL, INCLUDING PHOTOCOPYING, RECORDING, OR BY ANY INFORMATION STORAGE AND RETRIEVAL SYSTEM, WITHOUT THE WRITTEN PERMISSION OF KELLY GROUP, INC. OR ITS AGENTS. THE USER OF THIS DRAWING OR DESIGN AGREES TO HOLD KELLY GROUP, INC. AND ITS AGENTS HARMLESS FROM AND AGAINST ALL SUCH REPRODUCTION OR TRANSMISSION WITHOUT SUCH PERMISSION.

EASY TO ASSEMBLE PANEL  
SYSTEMS FOR RELOCATABLE  
ENCLOSURES FROM WEATHER  
BARRIERS TO BUILDINGS

Mfg. by Kelly Group, Inc.  
P.O. Box 1058 Fremont, NE 68026  
Phone: 800-228-7230 Fax: 402-727-1363 Web: [www.kellyklosure.com](http://www.kellyklosure.com)